

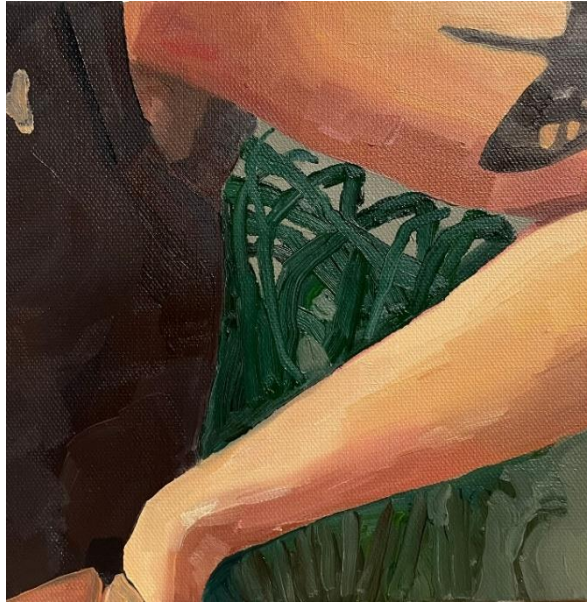
THIS IS EARTHLY STUFF

AMP Gallery, 1 Acorn Parade, London SE15 2TZ

26-28 April 11:00 – 18:00

Private View: Thursday 25 April 18:00 – 21:00

Artists: *Emma Phillips* ◦ *Aline Bittar Kunzel* ◦ *Zane Drees* ◦ *Octavia Madden* ◦ *Millicent Evans* ◦ *Oonagh Quinn* ◦ *Jenna Waldren*



This is Earthly Stuff introduces a cohort of seven UK-based emerging artists, exploring our complex relationships with the earth, each other, and the intimacy of our entangled lives - bodily, spiritually, and ecologically, with sensitivity and boldness in equal measure.

Brought together through study on the Royal Drawing School's Autumn Intensive in 2023, the artists' shared interest in contemporary and traditional drawing practices underpins much of the work showcased here. This results in a vibrant and frenetic ensemble of works, demonstrating diverse and experimental approaches to image making, rooted in drawing.

The natural world takes on a variety of roles throughout the exhibition, infused with each artist's unique perspective and visual language. At times, it takes centre stage in bold abstract compositions that challenge us to reflect on the ecological impacts of environmental change, at others, it lurks in the background, setting the stage for strange happenings. Elsewhere, figures dominate the frame, inviting us to reconsider the relationship between our bodies and the spaces they inhabit, blurring the lines between earth and flesh.

Demonstrated in both form and subject matter, a sense of intimacy also pervades the exhibition, present in the warmth of a sunbeam cast over soft skin, the attentive study of single organism, a lightness of brushwork, a too close crop - both comforting and disconcerting.

This is Earthly Stuff invites you in to explore this strange terrain, to wander and observe, and take note of our own footprints in the sand.

Enquires: thisisearthlystuff@gmail.com

Image credits: Oonagh Quinn